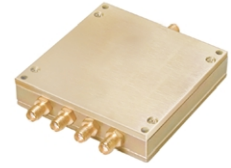


Coaxial Power Splitter/Combiner

4 Way-0° 50Ω 670 to 1000 MHz

ZN4PD-920W+ ZN4PD-920W



CASE STYLE: UU182

Connectors	Model	Price	Qty.
SMA	ZN4PD-920W-S(+)	\$79.95	(1-9)

+ RoHS compliant in accordance with EU Directive (2002/95/EC)

The +Suffix identifies RoHS Compliance. See our web site for RoHS Compliance methodologies and qualifications.

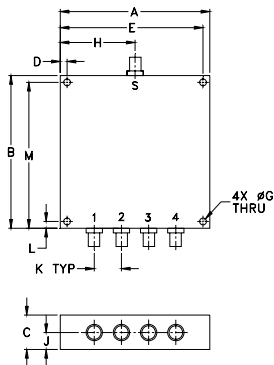
Maximum Ratings

Operating Temperature	-55°C to 100°C
Storage Temperature	-55°C to 100°C
Power Input (as a splitter)	10W max.
Internal Dissipation	0.375W max.

Coaxial Connections

SUMPORT	S
PORT 1	1
PORT 2	2
PORT 3	3
PORT 4	4

Outline Drawing



Outline Dimensions (inch/mm)

A	B	C	D	E	F	G
2.75	2.80	.63	.125	2.625	-	.125
69.85	71.12	16.00	3.18	66.68	-	3.18
H	J	K	L	M		wt
1.38	.31	.500	.125	2.675		grams
35.05	7.87	12.70	3.18	67.95		140

Features

- wideband, 670 to 1000 MHz
- rugged, shielded case
- up to 10W power output as splitter
- excellent output VSWR, 1.07:1 typ.

Applications

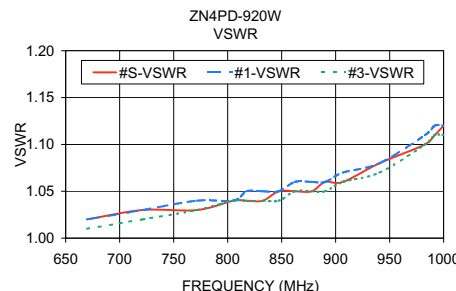
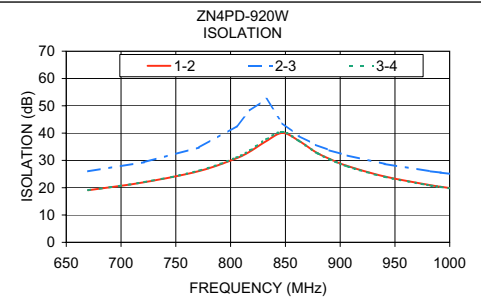
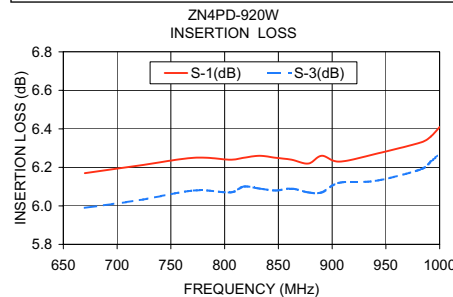
- UHF
- cellular
- receivers/transmitters

Electrical Specifications

FREQ. RANGE (MHz)	ISOLATION (dB)		INSERTION LOSS (dB) ABOVE 4.8 dB		PHASE UNBALANCE (Degrees)	AMPLITUDE UNBALANCE (dB)	VSWR (:1)			
	Typ.	Min.	Typ.	Max.			S		OUT	
f_L - f_U					Max.	Max.	Typ.	Max.	Typ.	Max.
670-1000	22	15	0.3	0.6	3	0.2	1.2	1.6	1.07	1.25

Typical Performance Data

Freq. (MHz)	Insertion Loss (dB)				Amp. Unbal. (dB)	Isolation (dB)			Phase Unbal. (deg.)	VSWR S	VSWR 1	VSWR 2	VSWR 3	VSWR 4
	S-1	S-2	S-3	S-4		1-2	2-3	3-4						
670.00	6.17	6.02	5.99	6.15	0.18	19.09	26.01	19.10	1.07	1.02	1.02	1.01	1.01	1.01
721.15	6.21	6.06	6.03	6.17	0.18	22.02	29.36	22.08	1.11	1.03	1.03	1.02	1.02	1.02
771.48	6.25	6.11	6.08	6.22	0.16	26.13	34.77	26.29	1.11	1.03	1.04	1.03	1.03	1.03
805.30	6.24	6.09	6.07	6.21	0.16	30.79	42.50	31.05	1.09	1.04	1.04	1.04	1.04	1.04
817.68	6.25	6.10	6.10	6.23	0.15	33.27	48.28	33.71	1.08	1.04	1.05	1.04	1.04	1.04
832.53	6.26	6.11	6.09	6.23	0.17	37.05	52.53	37.74	1.06	1.04	1.05	1.04	1.04	1.04
847.38	6.25	6.11	6.08	6.23	0.17	40.05	43.62	40.44	1.04	1.05	1.05	1.04	1.04	1.05
862.23	6.24	6.10	6.09	6.21	0.15	37.20	38.99	37.17	1.02	1.05	1.06	1.05	1.05	1.04
877.90	6.22	6.07	6.07	6.19	0.16	33.01	35.69	32.93	1.02	1.05	1.06	1.05	1.05	1.05
890.28	6.26	6.12	6.07	6.22	0.19	30.58	33.71	30.42	1.04	1.06	1.06	1.05	1.05	1.05
906.78	6.23	6.11	6.12	6.23	0.12	27.94	31.79	27.79	1.07	1.06	1.07	1.06	1.06	1.06
940.60	6.27	6.13	6.13	6.27	0.14	24.11	28.71	23.96	1.15	1.08	1.08	1.08	1.07	1.07
982.68	6.33	6.21	6.19	6.32	0.13	20.91	26.00	20.79	1.27	1.10	1.11	1.10	1.10	1.10
991.75	6.36	6.25	6.23	6.34	0.13	20.35	25.54	20.25	1.30	1.11	1.12	1.11	1.11	1.11
1000.00	6.41	6.28	6.27	6.38	0.14	19.87	25.10	19.76	1.33	1.12	1.12	1.12	1.11	1.11



electrical schematic



Mini-Circuits
ISO 9001 ISO 14001 CERTIFIED

ALL NEW
minicircuits.com

P.O. Box 350166, Brooklyn, New York 11235-0003 (718) 934-4500 Fax (718) 332-4661 For detailed performance specs & shopping online see Mini-Circuits web site



The Design Engineers Search Engine Provides ACTUAL Data Instantly From MINI-CIRCUITS At: www.minicircuits.com

REV. A
M104775
ZN4PD-920W
HY/TD/CP/AM
070424

RF/IF MICROWAVE COMPONENTS